

Bt-BOX MINI

Quick Start Guide



Package Contents

- Bt-BOX MINI : BitTorrent/HTTP/FTP Download Station
- USB Flash Drive (Bt-BOX MINI system)
- Power Adapter for Bt-BOX MINI
- LAN Cable
- CD-ROM Bt-BOX MINI Software
- Quick Start Guide
- Registration Card

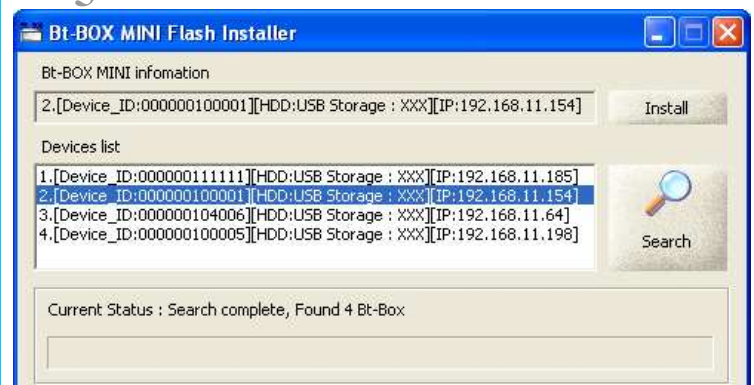
1 Install Bt-BOX MINI to network

1. Plug in LAN cable to ethernet port of Bt-BOX MINI and connect the other end to router or hub of network
2. Plug in USB flash drive to USB Disk 2
3. Plug in Power Adapter to Bt-BOX MINI, then the red LED is now on
4. Wait about 1 minute for Bt-BOX MINI to get ready in boot mode. When network connection is ready, yellow and red LEDs are on. (If only red LED is on, the network is not ready)
5. Find IP Address of Bt-BOX MINI by Bt-BOX MINI Installer program (on CD-Rom). Search for IP address of all Bt-BOX MINIs within the network.

NOTE: Bt-BOX MINI automatically requests IP address from router (DHCP Server). If this is not possible, Bt-BOX MINI will apply **IP address of 192.168.0.2**



5



2 USB Hard Disk Installation

When Bt-BOX MINI is ready, user can start using it by entering Web Browser and enter IP Address of Bt-BOX MINI into address bar (IP address acquired from step 5 of the previous process)

NOTE: For 1st time, please login by
Username: admin
Password: admin

1. Connect USB hard disk to Disk 1 of Bt-BOX MINI



2. Wait until green LED (hard disk) is on
3. Check working status from Bt-BOX MINI Control Panel > HDD



HDD

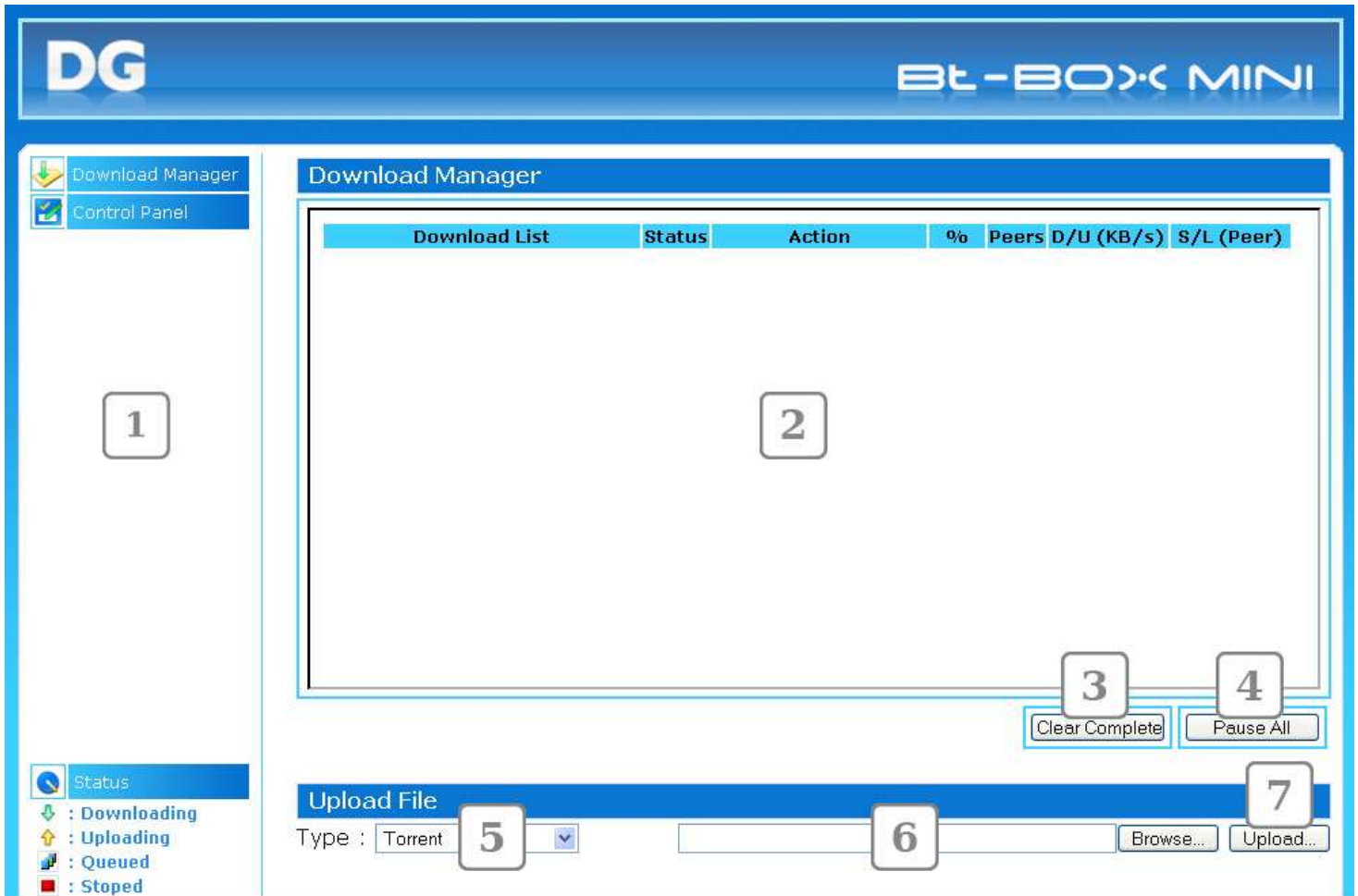
4. Bt-BOX MINI automatically mounts to hard disk with NTFS File System. For other file systems, click “mount” to start mounting process.

Partition Name	Size	Used	Partition Type	Mount Point	
Internal[OK]	708.9 MB	1%	Linux	/internal	unmount
External	74.5 GB		HPFS/NTFS	/external	mount

NOTE :

1. User needs to format USB hard disk into 1 partition before using. Bt-BOX MINI supports 3 types of File System: **NTFS, ext2/ext3 and FAT32**
2. External power supply is required for 2.5” USB hard disk (hard disk for notebook computer). Insufficient power supply may cause damage to hard disk.

3 How to use Download Manager



No.	Description
1	Main menu of Bt-BOX MINI
2	Download status window
3	“Clear Complete” button for removing all finished tasks from download status window
4	“Pause All” button for stopping all tasks temporarily
5	Select download type (Torrent/HTTP/FTP)
6	Address bar for selected file which user wants to get from hard disk of PC
7	“Upload” button for starting download selected file that shown on the address bar

4 Download Torrent File

Download Torrent file with Bt-BOX MINI by 6 steps:

1. Download the selected file. torrent and save it to PC

Name	Size	Type	Date Modified
Rubix.torrent	11 KB	BitComet File	3/9/2550 18:12

2. Go to Download Manager and click “Browse” and select file.torrent to Download Manger

Upload File
Type : Torrent

3. Click “Upload” to upload file .torrent to Download Manager on Bt-BOX MINI

Upload File
Type : Torrent

4. Select whether to save the file on external hard disk or internal memory (USB Flash Drive)

Confirm your task

File name : rubix.torrent

-	Disk	Total	Free
<input checked="" type="radio"/>	Internal	220.3M	206.9M
<input type="radio"/>	External	74.5G	74.4G

5. Click “Submit”
6. Click “Download” on Download Manager to let Bt-BOX MINI starts downloading the selected file. torrent.

Download List	Status	Action	%	Peers	D/U (KB/s)	S/L (Peer)
Rubix.torrent	↓	    	0.10	4	52.20/0.00	4/0

5 Download file with HTTP and FTP Protocol

Users can download file(s) with HTTP and FTP protocol by the following commands:

1. Select download type to HTTP/FTP



2. Wait until “HTTP/FTP Download” window appears as picture below, then input the required URL into the URL bar



NOTE : Select Encoding to
TIS-620 (for URL in Thai or partly in Thai)
EUC-JP (for URL in Japanese or partly in Japanese)
If URL is in English, user can select either one above

3. Click “Submit” and wait until this task has been sent to Download Manager (.http or .ftp appears after file name to indicate file type as below picture)



4. Start to download file(s) on Download Manager window (no upload for HTTP and FTP)

NOTE: If user wants to Login both HTTP and FTP, input URL as
(http/ftp)://USERNAME:PASSWORD@URL
For example, http://my_user:my_pass@my_site.com/my_file.zip
ftp://user:pass@123.234.15.235/abcdef.avi

6 Moving downloaded file to PC

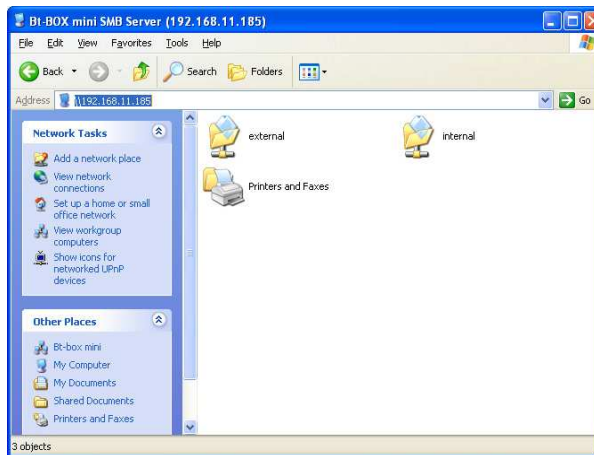
Moving downloaded file(s) to PC can be done by 2 ways:

Windows File Sharing

1. Go to Start > Run... of Windows



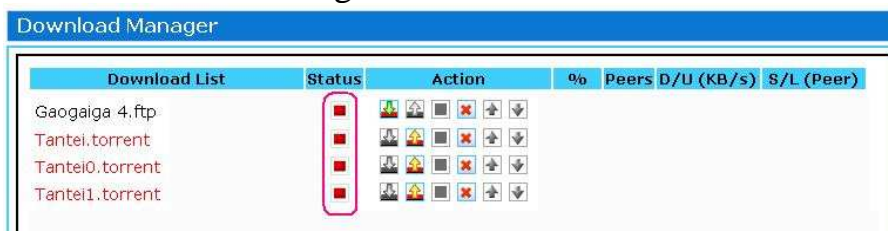
2. Key in \\ followed by IP Address of Bt-BOX MINI for example, "\\192.168.1.100"
3. Click "OK" and wait until Sharing window appears



4. Copy file(s) to PC

Shut down Bt-BOX MINI and connect USB Hard Disk directly to PC

1. Stop all tasks on Download Manager



2. Go to Control Panel > HDD



HDD

3. Click "unmount" on Hard Disk details
4. Unplug USB Hard Disk from PC without shutting down Bt-BOX MINI

**For more details of Bt-BOX MINI, please see FAQ on Bt-BOX
MINI Web board**

<http://www.design-gateway.com/bt-box/>

The logo consists of the letters 'D' and 'G' in a bold, blue, sans-serif font. The 'D' is on the left and the 'G' is on the right, both with a consistent thickness and rounded edges. They are set against a white background.