

Bt-BOX MINI

Quick Start Guide

For more detailed information, please refer to User Manual from <http://www.design-gateway.com/bt-box>

■ Connections

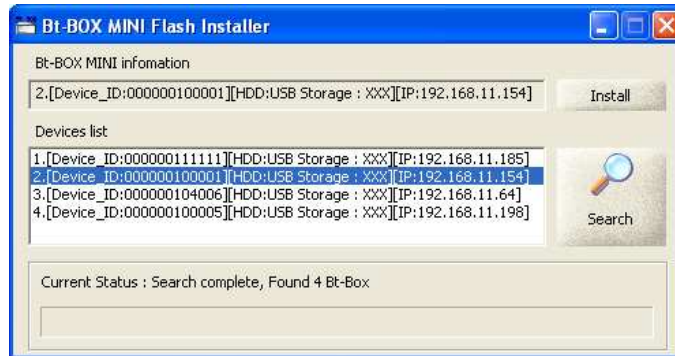
1. Connect USB Flash Drive to Disk2
2. Connect LAN cable
3. Connect Power Adapter



- Provided USB Flash Memory must be inserted in “Disk2”
- Do not format the USB Flash Memory because it stores Bt-BOX MINI program.
 - * If user has formatted it by mistake. Please refer to “Reinstall program to Flash Drive” in User Manual
- User can use external HDD by connecting with “Disk1”.
 - * To learn extend HDD connection, please refer to “External Hard Disk” in User Manual

■ LAN connection check

Use “**Bt-BOX MINI Flash Installer.exe**” (please download this program from Bt-BOX MINI website www.design-gateway.com/bt-box). User can check LAN connection and IP address of Bt-BOX MINI from this installer.



- Default setting is DHCP and IP of Bt-BOX MINI is named automatically.
 - * User can set fix IP address. For fix IP address setting, please refer to “IP Address Setting” in User Manual

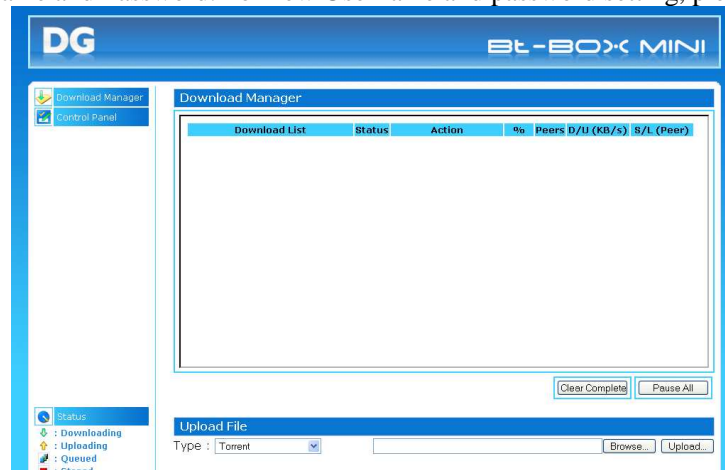
■ File Downloading by BitTorrent *To download HTTP/FTP, please see User Manual

1. Download “.torrent” file in advance. (About torrent, search information from any available web community)
2. To access Bt-BOX MINI, type IP address of Bt-BOX MINI into address bar of web browser (e.g. IE)

3. Login

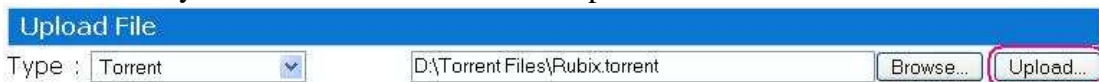
Username: admin
Password: admin

* User can set new Username and Password. For new Username and password setting, please refer to User Manual



4. Upload “.torrent” file to Bt-BOX MINI

Select “.torrent” file by “Browse” button and click “Upload” button.



5. Select storage

User can select storage between Internal (Flash Drive) and External (USB Hard Disk)

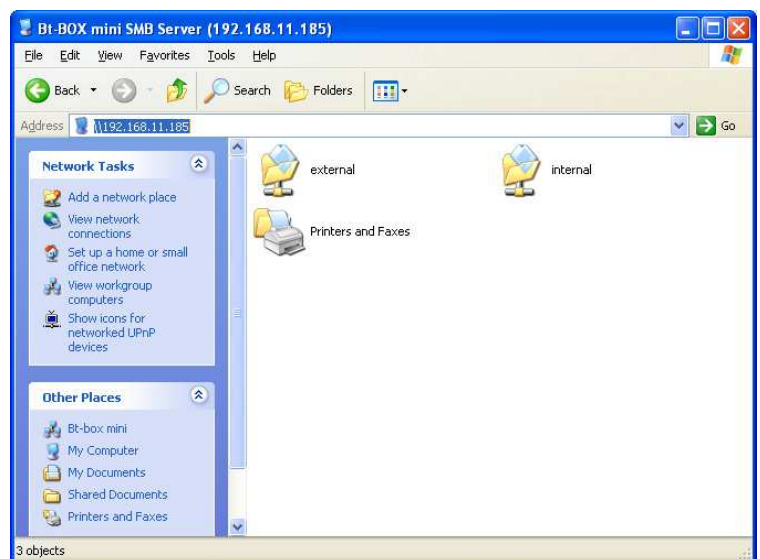
-	Disk	Total	Free
<input checked="" type="radio"/>	Internal	697.8M	658.7M
<input type="radio"/>	External	74.5G	35.0G

6. Click button in Download Manager to start downloading.

■ Open/Copy downloaded file from Bt-BOX MINI

There are 2 ways to open/copy downloaded file from Bt-BOX MINI.

1. Type IP address of Bt-BOX MINI into address bar of file explorer such as “\\192.168.1.123”. (“\\” before IP address is necessary.)
2. If user use external HDD (Disk1), disconnect the HDD from Bt-BOX MINI and connect to PC by USB.



See FAQ and the latest Bt-BOX MINI program on
<http://www.design-gateway.com/bt-box>